

060-1300  
Flush Mount  
Security Latch



This redesigned security lock is intended for recreational vehicle entrance doors including motor homes and travel trailers where it is advantageous to use a remote mounted security lock. It features a serviceable KeyOne™ Plus lock cylinder, is power lockable and provides for easier installation.

**DESIGNED FOR:**

- Entrance door applications in travel trailers and motor homes with thicknesses of 1-1/2" (38.1mm) to 2-1/2" (63.5mm)
- Applications where it is desirable to use a remote mounted security lock



[www.trimarkcorp.com](http://www.trimarkcorp.com)

**TriMark Corporation**  
500 Bailey Avenue  
P.O. Box 350  
New Hampton, Iowa 50659  
United States  
Tel: 641-394-3188  
Fax: 641-394-2392  
1-800-447-0343  
[www.trimarkcorp.com](http://www.trimarkcorp.com)

**TriMark Europe**  
Cedar Court  
Walker Road  
Bardon Hill  
Coalville LE67 1TU  
United Kingdom  
Tel: +44(0)1530 512460  
Fax: +44(0)1530 512461  
[www.trimarkeu.com](http://www.trimarkeu.com)

#### FEATURES/BENEFITS:

- Can be mounted on either hollow or solid core door on travel trailers and motor homes
- Universal round design allows for use on left or right hand doors
- Dead bolt locks into the fully extended position for true dead bolt functioning
- Adaptable to powerlock actuation
- KeyOne™ Plus lock allows for serviceable lock cylinder

#### AVAILABLE:

- Keyed random with 100 key codes
- Standard 5-1/2" (139.7mm) backset
- Lock can be keyed to match other TriMark door products with KeyOne™ Plus for a single-key system, keyed alike or provided non-locking



#### INSTALLATION:

- Security lock sub-assemblies (3) are easy to install with supplied fasteners (inside and outside assemblies only)
- Supplied with gasket already applied under recess in housing flange for simple, clean installation

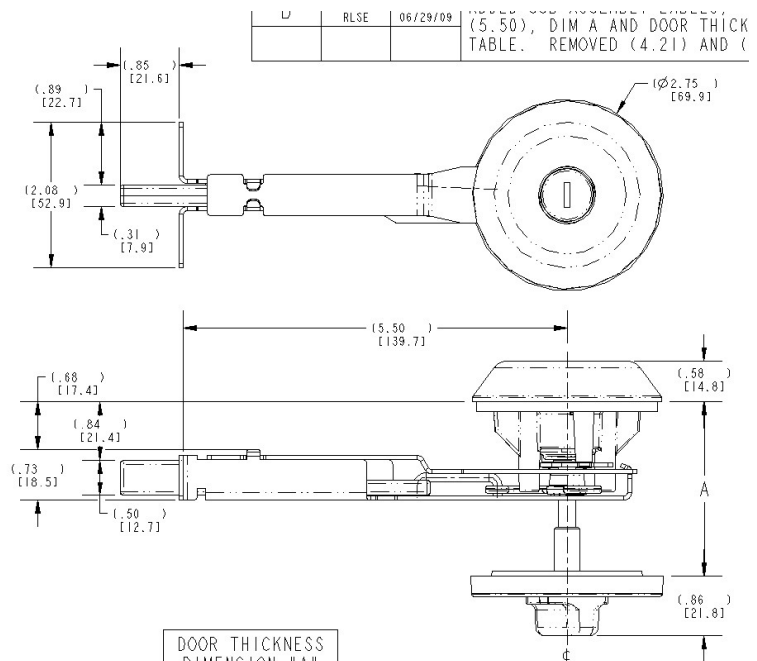
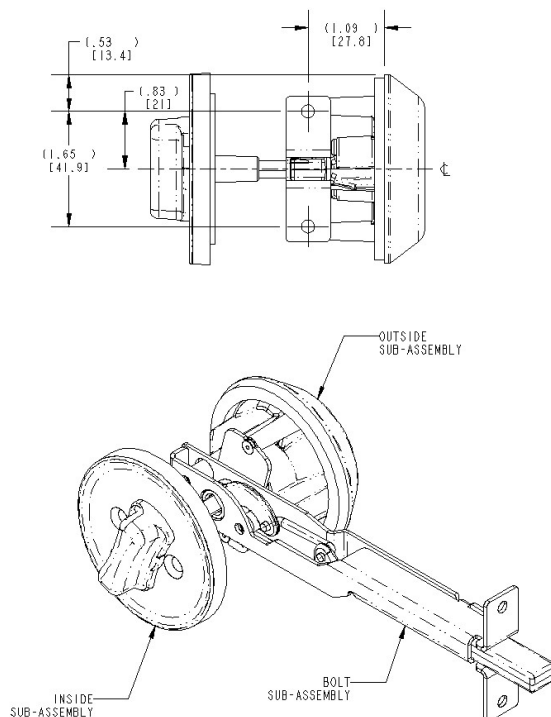
#### MATERIAL:

- Interior/exterior housing, lock knob and deadbolt - die cast zinc alloy
- Stamped steel deadbolt carrier

#### FINISH:

- Black powder coated or chrome
- Additional colors and finishes available – please inquire
- Zinc plated clear chromate steel components

Individual part dimensions are for reference only. Refer to individual part drawings for complete dimensions, specifications, and installation procedures. Engineering assistance and application drawings are available.



#### PRODUCT SUPPORT DRA

Individual part dimensions are for reference only. Refer to individual part drawings for complete dimensions and specifications.

For more information visit  
[www.trimarkcorp.com](http://www.trimarkcorp.com)

